



TECHNINE

SMB TECHNOLOGY USER GROUP

TECHNINE

SMB TECHNOLOGY USER GROUP

Bart Bultinck
bart@integreat.be
@evilbart



- Onedrive KFM – (Known Folder Move)
- Now renamed to “Onedrive folder protection”
 - Business Ready of for home use?

- What?
- How?
- Are there problems?
- Business Ready or Not?

- What is it?
 - KFM (know folder move) is basically:
 - Sync your Documents, Pictures and Desktop folders with Onedrive (for Business?)
 - Works with windows 7, 8, 10

- **Set up:**

1. Enable Onedrive 😊
 1. Personal
 2. Work or school
2. Open Onedrive settings (white or blue icon) and select more settings
3. In Settings, select Auto Save > Update folders.
4. To start protecting a folder, select any folder that doesn't say Files protected, and then select **Start protection**.



- What is not possible?
 - Outlook database files (.pst)
 - Onenote files that aren't already stored in onedrive
 - Solution: move these files out of the protected folders
😊
 - No sync of Downloads folder ! (yet?)

- Folder protection unavailable
 - Error: domain joined pc's trying to save to personal Onedrive
- File exceeds maximum path length
 - Make sure the entire file path, including the file name, contains fewer than 520 characters on Windows 10 or under 260 characters on Windows 7
- File exceeds maximum file size
 - 20 GB
- File name isn't allowed in Onedrive
 - File names can't start with a space or include any of these characters: \ : / * ? < > " | .

- The *folder is on a different volume* than OneDrive:
 - OneDrive is set up to sync on a different volume than the folder selected for protection. A couple of common ways this can happen are
 1. if you set up your PC such that OneDrive is on the D: drive, but the Documents folder is on the C: drive, or
 2. if you have your folders pointed to a network share (this would most likely happen at school or work).
 - To resolve this issue, set up OneDrive on the same volume as the folder you're trying to protect. In OneDrive settings, click **Unlink this PC**. After unlinking, sign in again and choose the root folder location to be on the same volume as the folder you want to sync.
 - You can also manually move the folder you want to sync to the same volume as OneDrive by right-clicking the folder, selecting the location tab, and choosing a location that's on the same volume as OneDrive.

- *An unknown error occurred, with error code 0x80070005:*
 - If you receive error code 0x80070005, the "Prohibit User from manually redirecting Profile Folders" group policy is enabled. You may find that the files from the folders you selected were moved to identically named folders in your OneDrive folder, and the original locations are empty. Move the folder contents back to the original locations and ask your administrator whether the policy can be changed.
- *Folder contains a reparse point (junction point or symlink):*
 - The folder you want to protect contains a special file type that links parts of the file system together. These items can't be protected. To protect the folder, remove the file causing the issue.

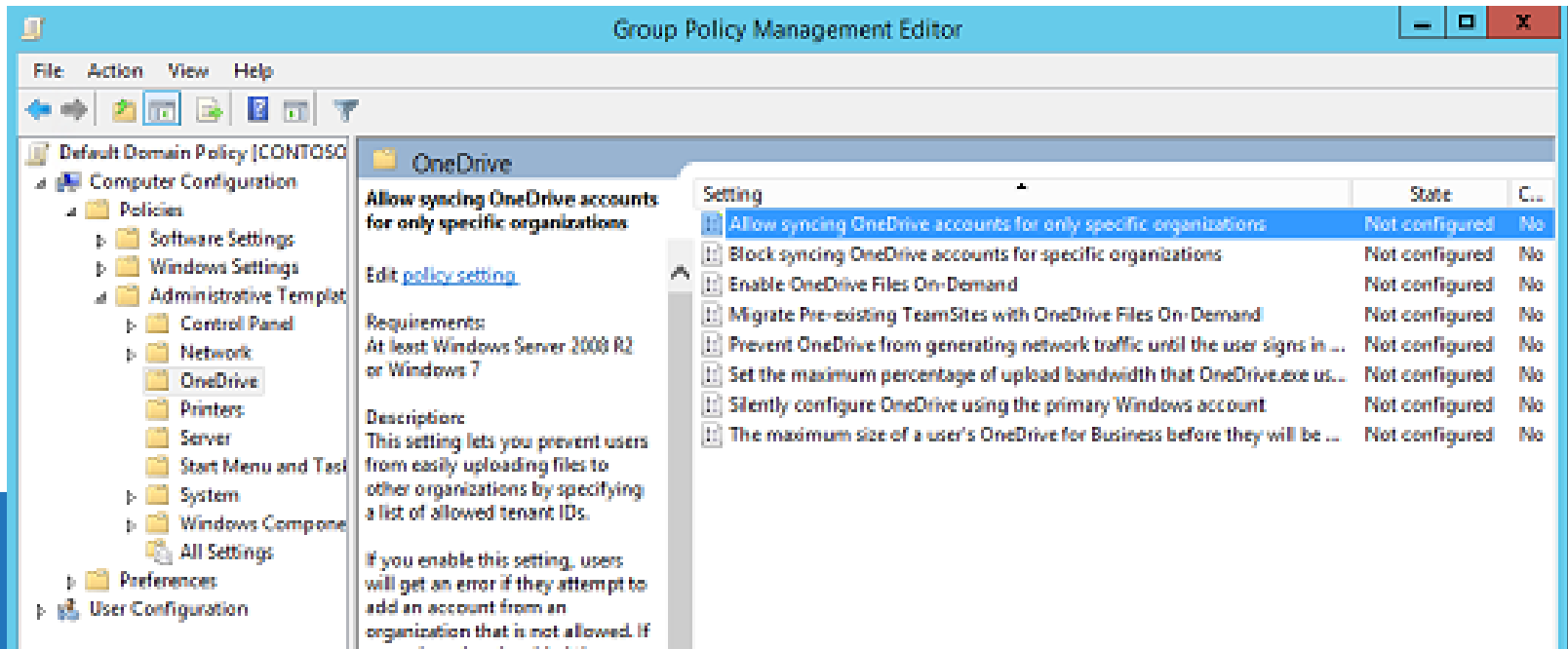
- Business Side
 - Two primary advantages
 - Your users can continue using the folders they're familiar with. They don't have to change their daily work habits to save files to OneDrive.
 - Saving files to OneDrive backs up your users' data in the cloud and gives them access to their files from any device
 - Microsoft targets this for business use!
 - GPO's are available
 - All GPO's for onedrive can be found here:
<https://docs.microsoft.com/en-us/onedrive/use-group-policy>

- How to manage onedrive using GPO?
 - Install the latest OneDrive sync client on a PC running Windows 10. This downloads the .adml and .admx files.
 - Browse to
%localappdata%\Microsoft\OneDrive\BuildNumber\adm,
to the subfolder for your language as necessary.
- Copy the .adml and .admx files.
- Paste the .admx file in your domain's **Central Store**,
`\domain\systvol\domain\Policies\PolicyDefinitions`,
- Apply filter to narrow scope policy (eg desktops OU, laptops OU)

KNOWN FOLDER MOVE GROUP POLICY OBJECTS

- **Prereq :**
 - OneDrive sync build 18.111.0603.0004 or later.
 - You can see your build number in the About tab in OneDrive settings.
- **Important**
 - The OneDrive Known Folder Move Group Policy objects won't work if you previously used Windows Folder Redirection Group Policy objects to redirect the Documents, Pictures, or Desktop folders to a location other than OneDrive.
 - Remove the Windows Group Policy objects for these folders before you enable the OneDrive Group Policy objects.
 - The OneDrive Group Policy objects won't affect the Music and Videos folders, so you can keep them redirected with the Windows Group Policy objects.
- **TIP:**
 - If your organization is large and your users have a lot of files in their known folders, make sure you roll out the Group Policy objects slowly to minimize the network impact of uploading files.

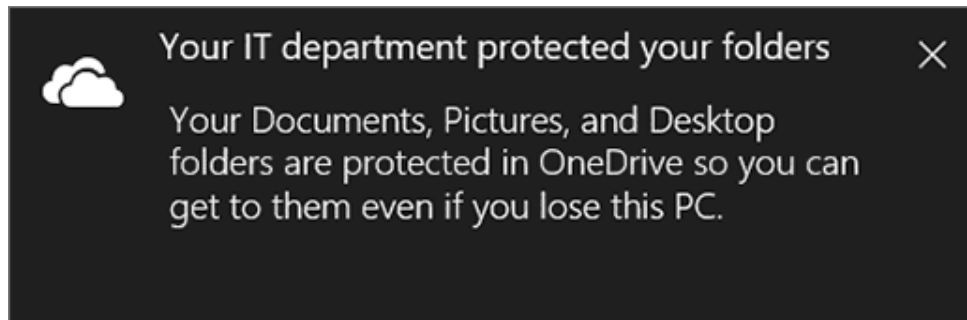
- Computer Configuration policies
 - Computer Configuration policies can be found under Computer Configuration\Policies\Administrative Templates\OneDrive.



The screenshot displays the Group Policy Management Editor window. The left-hand navigation pane shows the hierarchy: Default Domain Policy (CONTOSO) > Computer Configuration > Policies > Administrative Templates > OneDrive. The main pane shows the 'OneDrive' folder expanded, with the policy 'Allow syncing OneDrive accounts for only specific organizations' selected. The right-hand pane shows a list of settings for this policy, including 'Block syncing OneDrive accounts for specific organizations', 'Enable OneDrive Files On-Demand', 'Migrate Pre-existing TeamSites with OneDrive Files On-Demand', 'Prevent OneDrive from generating network traffic until the user signs in...', 'Set the maximum percentage of upload bandwidth that OneDrive.exe uses...', 'Silently configure OneDrive using the primary Windows account', and 'The maximum size of a user's OneDrive for Business before they will be...'. The 'State' column for all settings is 'Not configured'.

Setting	State	C...
<input checked="" type="checkbox"/> Allow syncing OneDrive accounts for only specific organizations	Not configured	No
<input checked="" type="checkbox"/> Block syncing OneDrive accounts for specific organizations	Not configured	No
<input checked="" type="checkbox"/> Enable OneDrive Files On-Demand	Not configured	No
<input checked="" type="checkbox"/> Migrate Pre-existing TeamSites with OneDrive Files On-Demand	Not configured	No
<input checked="" type="checkbox"/> Prevent OneDrive from generating network traffic until the user signs in ...	Not configured	No
<input checked="" type="checkbox"/> Set the maximum percentage of upload bandwidth that OneDrive.exe uses...	Not configured	No
<input checked="" type="checkbox"/> Silently configure OneDrive using the primary Windows account	Not configured	No
<input checked="" type="checkbox"/> The maximum size of a user's OneDrive for Business before they will be ...	Not configured	No

- SilentAutoConfig
 - Prompt users to sync
 - Silently Move Windows known folders : 😊

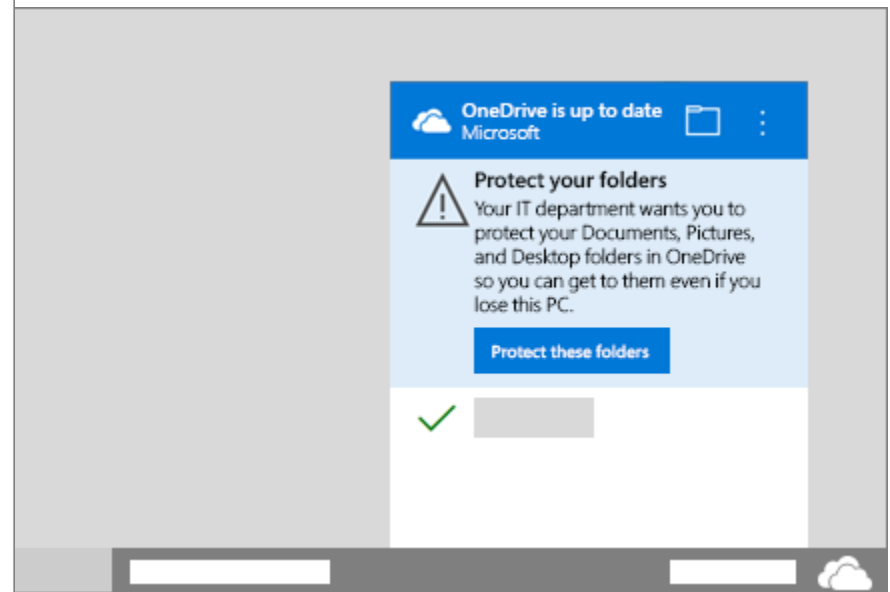
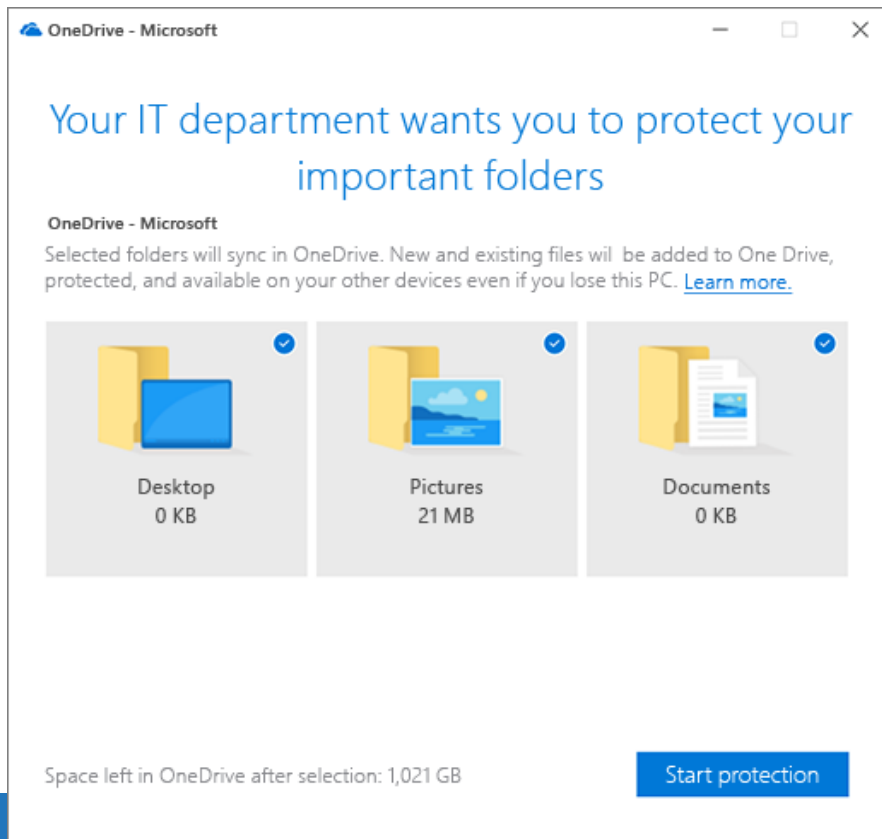


- Prevent users from redirecting : 😞
- Prevent users from moving their known folders to onedrive
- Configure Team site libraries to sync automatically
 - Setting in the admx file but not turned on yet !!!

- Set the default location for the OneDrive folder
- Prevent users from changing the location of their OneDrive folder
- Prevent users from synchronizing personal OneDrive account
- Set the maximum upload bandwidth that OneDrive.exe uses
- Coauthoring and in-app sharing for Office files



- End user experience



- The OneDrive Group Policy objects work by setting registry keys on the computers in your domain.
 - When you enable or disable a policy, the corresponding registry key is updated on computers in your domain. If you later set the policy back to **Not configured**, the corresponding registry key is not modified and the effective policy setting does not change. So after you configure a policy, use the **Enabled** and **Disabled** settings for that policy going forward.
 - The location where registry keys are written has been updated. When you use the latest files, you might delete registry keys that you set previously.

- **Deploy using intune**

- <https://gallery.technet.microsoft.com/scriptcenter/Onedrive-Known-Folder-Move-dfcea689>
 - <#
 - .SYNOPSIS
 - Scrip for Intune to configure Computersettings in Onedrive
 -
 - .DESCRIPTION
 - This script will configure Onedrive settings in Onedrive for the Computer
 - Settings are collected from <https://docs.microsoft.com/en-us/onedrive/use-group-policy>
 - The script is designed to be deployed with Microsoft Intune Management Extention
 - It will return True if success and false if unsuccessfull configuration of the settings.
 -
 - .EXAMPLE
 - .\Intune-OnedriveComputer.ps1
 - Will configure onedrive for the executing computer with settings in the modifyable region.
 -
 - .PARAMETER Variable1
 - This parameter accepts...
 -
 - .PARAMETER Variable2
 - This parameter accepts...
 -
 - .NOTES
 - Written by Torbjörn Granheden Coligo AB
 - torbjorn.granheden@coligo.se

- Conclusion
 - Usable for business ?
 - data loss remains a significant risk for end users if they're only keeping files locally on their devices.
 - IF you use onedrive for business, this is a must have
- Questions?